

Main Features

- Connectors to pressure pipes (welding or soldering)
- Brass or stainless steel 1.4401 (316)

Applications

- Oil & Gas / Chemical
- Water & Waste water
- Energy
- Machinery

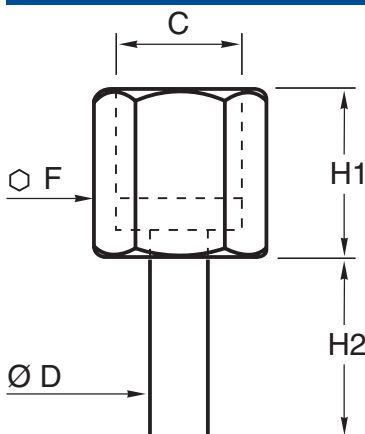
Ordering details AEKT

		-	x	x
Model	Stub connectors	AEKT		
Material	Brass		L	
	Stainless steel		2	
Instrument connection	M10 x 100 DIN swiveling nut			P
	G 1/4 swiveling nut			H
	G 3/8 swiveling nut			K
	G 1/2 swiveling nut			L

Options

Degreased for oxygen applications	Code 0765
Material certificate 3.1	Code Q003

Dimensions (mm)



Dimensions for reference only

C	D ⁽¹⁾	F	H1	H2	Ø int.
M10 x 100	6	12	14.5	17.5	2
G 1/4	8	17	16	17	3
G 3/8	10	23	21	25	3
G 1/2	11.5	27	24	21	5

⁽¹⁾ Other diameters on request