



Main Features

- Directly integrated in the pipe
- Excellent cleaning behaviour
- Wetted parts 1.4435 / 1.4404 (316L) or 1.4571 (316Ti)
- Compatible to SIP and CIP processes
- Easy and fast installation

Applications

- Food & Beverage
- Laboratory & Medical

Description

This in-line diaphragm seals are used to design hygienic process connections for pressure gauges and protect the pressure gauges from high temperatures and aggressive process fluids.

In-line diaphragm seals with hygienic process connections ensure efficient cleaning processes and avoid pollutions and developing of bacterias in hygienic production processes.

Diaphragm seals can be mounted to mechanical pressure gauges, switches or transmitters directly or with a flexible capillary. The filling fluid of the measuring system has to be chosen compatible to the application. For hygienic applications a choice of FDA conform filling fluids is available.

Process connection	DIN 11851
Pressure ranges	0 ... 1 bar to 0 ... 40 bar (see table below)
Body material	Stainless Steel 1.4571 (316Ti)
Diaphragm	Stainless Steel 1.4435 or 1.4404 (AISI 316L) or 1.4571 (316Ti)
Surface roughness	Wetted parts Ra ≤ 0.8 µm Option 1359: electropolished, Ra ≤ 0.5 µm (except welding)
Working temperature	-20 ... 225 °C (depending on the filling fluid)
Filling fluids	LRS1: Vaseline (-15 ... +150 °C, FDA conform) LRS10: Vaseline (-20 ... +225 °C, FDA conform) Other filling fluids on request
Gaskets	Not included

Ordering code / Minimum pressure ranges

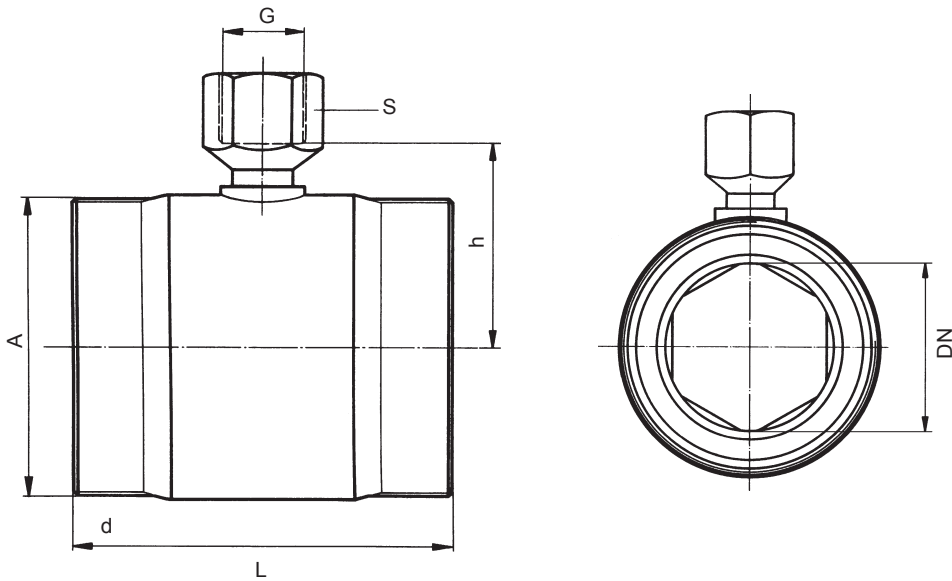
Code	DN	Pressure gauges ⁽¹⁾		Transmitters ⁽²⁾	P max. ⁽³⁾
		NS 50-63 mm	NS 100-150-160 mm		
1530	10	0 ... 4 bar	–	0 ... 1 bar	40 bar
1531	15	0 ... 1.6 bar	0 ... 2.5 bar	0 ... 1 bar	40 bar
1538	20	0 ... 1.6 bar	0 ... 1.6 bar	0 ... 1 bar	40 bar
1532	25	0 ... 1.6 bar	0 ... 1.6 bar	0 ... 1 bar	40 bar
1537	32	0 ... 1.6 bar	0 ... 1.6 bar	0 ... 1 bar	40 bar
1534	40	0 ... 1.6 bar	0 ... 1.6 bar	0 ... 1 bar	40 bar
1533	50	0 ... 1.6 bar	0 ... 1.6 bar	0 ... 1 bar	40 bar
1536	65	0 ... 1.6 bar	0 ... 1.6 bar	0 ... 1 bar	40 bar
1535	80	0 ... 1.6 bar	0 ... 1.6 bar	0 ... 1 bar	40 bar
1539	100	0 ... 1.6 bar	0 ... 1.6 bar	0 ... 1 bar	40 bar

⁽¹⁾ and corresponding compound pressure ranges

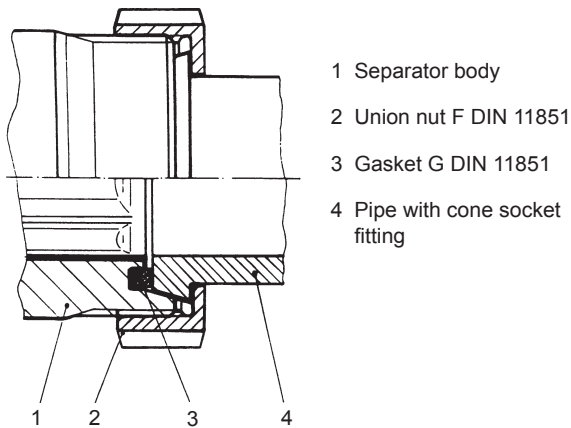
⁽²⁾ lower pressure ranges on request

⁽³⁾ depending on the used fixing elements (not part of the delivery).

Dimensions



Connection example



Dimension chart

DN	A	L	h	G	S	Weight kg	Inner shape
10	28 x 1/8	140	22	G 1/4	17	0.6	4-sided
15	34 x 1/8	130	27	G 1/4	17	0.8	4-sided
20	44 x 1/6	130	32	G 1/2	27	1.3	4-sided
25	52 x 1/6	130	39	G 1/2	27	1.7	6-sided
32	58 x 1/6	130	41	G 1/2	27	2.0	6-sided
40	65 x 1/6	120	51	G 1/2	27	2.2	6-sided
50	78 x 1/6	100	51	G 1/2	27	2.3	6-sided
65	95 x 1/6	100	60	G 1/2	27	3.0	8-sided
80	110 x 1/4	100	68	G 1/2	27	3.4	8-sided
100	130 x 1/4	100	78	G 1/2	27	4.0	8-sided

Ordering example

MEX 5 - D 3 0 . B22 / 1532 - 1359 - LRS1

In-line diaphragm seal, DN 25

Option: Electropolished, Ra ≤ 0.5 μm (except welding)

Filling fluid LRS1: Vaseline (-15 ... +150 °C, FDA conform)